

**NAVnet**

Model:

**TZT9/14/BB**

**TZ**  
touch

**NAVnet**

Model:

**TZTL12F/15F**

**TZT2BB**

**TZ2**  
touch

**NAVnet**

Model:

**TZT9F/12F/16F/19F**

**TZ3**  
touch

# How To Update Network Sensor Software Through TZtouch/TZtouch2/TZtouch3

## INDEX

### 1. New Uploader to Public

#### 1.1. Overview

#### 1.2. Uploader on NavNet TZtouch/2

### 2. Update Procedures

#### 2.1. Preparation

#### 2.2. Update via Uploader

# 1. New Uploader to Public

## 1.1. Overview

The **Uploader** is a new update tool to **update networked sensors through NavNet TZtouch (TZT9/14/BB v5.01 or later), TZtouch2 (TZTL12F/15F v4.01 or later, TZT2BB), and TZtouch3 (TZT9F/12F/16F/19F) MFDs**. With a USB memory or SD card for program files, Ethernet and NMEA2000 devices can be updated through the TZT9/14/BB, TZTL12F/15F, TZT2BB and TZT9F/12F/16F/19F.

## 1.2. Uploader on NavNet TZtouch/2

The following screenshots and table show how the new Uploader looks and what it offers.

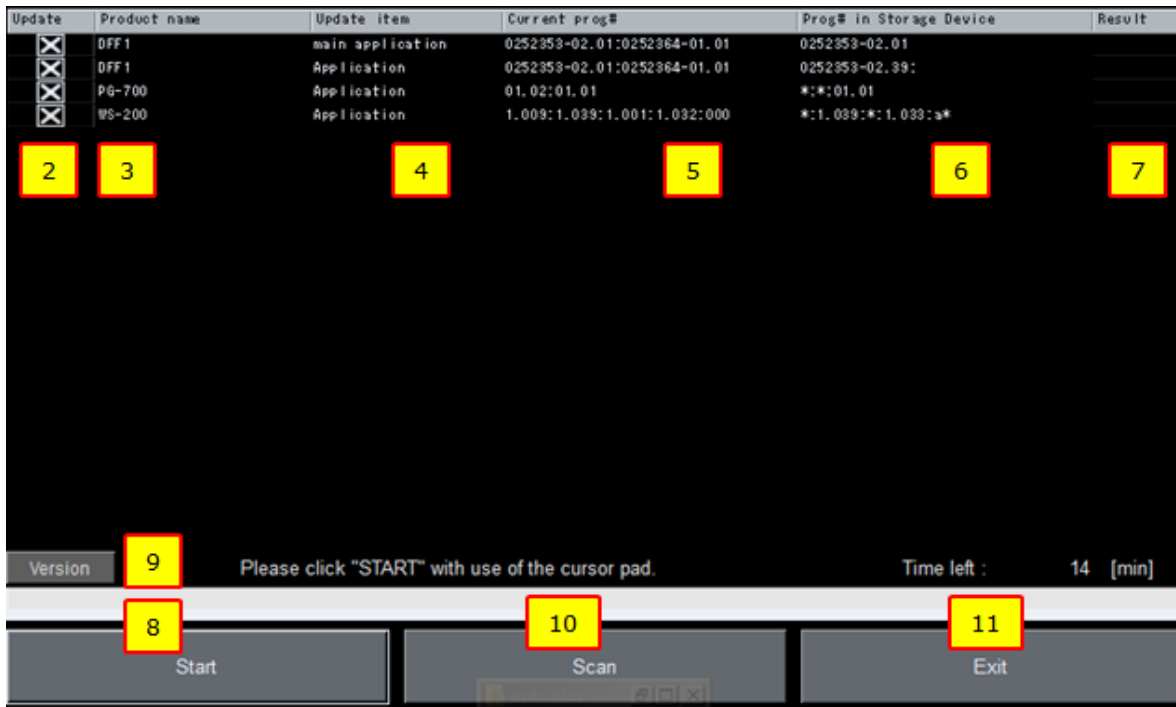
### TZTL12F/15F, TZT2BB, & TZT9F/12F/16F/19F

(Time)	Update	Product name	Update item	Current prog#	Prog# in Storage Device	Result
1 [min]	<input checked="" type="checkbox"/>	DFF1	main application	0252353-02.01:0252364-01.01	0252353-02.01	-
1 [min]	<input checked="" type="checkbox"/>	DFF1	Application	0252353-02.01:0252364-01.01	0252353-02.04:*	-
4 [min]	<input checked="" type="checkbox"/>	PG-700	Application	01.02:01.01	*.01.01	-
4 [min]	<input checked="" type="checkbox"/>	PG-700	Application	01.02:01.01	*.02.03	-

The screenshot shows the bottom portion of the application interface. At the bottom, there are several buttons and labels: 'Version' (9), 'Start' (8), 'Scan' (10), 'Please push 'Start'' (10), and 'Exit' (11). The table above has callouts 1-7 pointing to the first row of data.

**TZT9/14/BB**



No	Item	Descriptions
1	Time	Shows expected time to update
2	Update	Selects the target product to be updated. If the program in the update USB memory or SD card is different from the version in the product, the update box is checked with [✓] by default.
3	Product name	Lists detected products in the network. Note that the product name will <b>NOT</b> appear if the update USB memory or SD card does <b>NOT</b> contain a program package for the target product.
4	Update item	Shows the item to be updated such as application
5	Current prog#	Shows the currently installed program version in the product
6	Prog# in Storage Device	Shows the program version in the update USB memory
7	Result	Shows the result of update [OK] or [NG]
8	Start	Starts the update process of selected product(s)
9	Version	Shows the version of Uploader
10	Scan	Scans available products in the NavNet TZtouch/2 network
11	Exit	Closes the Uploader window

## 2. Update Procedures

### 2.1. Preparation

#### Preparation

(1) **USB** memory (TZT9/14/BB, TZTL12F/15F, TZT2BB, and TZT9F/12F/16F/19F) or **SD/HC/XC** (TZT9/14/BB)

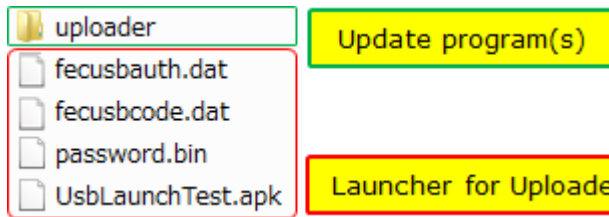


(TZTL12F/15F, TZT2BB, TZT9F/12F/16F/19F and TZT9/14/BB) or



(TZT9/14/BB only)

(2) Program package



**Directory:** x: ¥ ("x" for media in use)

#### [Uploader]

|-- Folders and files of update programs of each model

[fecusbauth.dat]

[fecusbcode.dat]

[password.bin]

[UsbLaunchTest.apk]

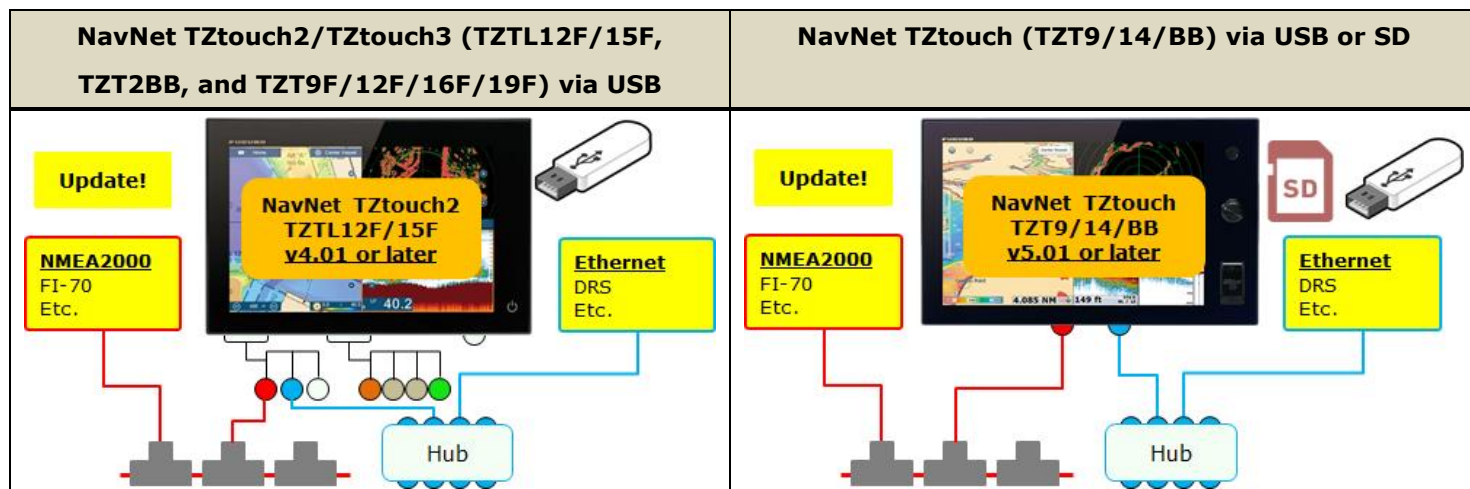
#### Tips:

The TZT9/14/BB can also accept an SD/HC/XC card for update as summarized in the following table.

Model	USB Port(s)	SD Slot(s)
TZTL12F/15F TZT2BB TZT9F/12F/16F/19F	<b>Compatible (USB2.0)</b> - Located at the rear pigtail	<b>NOT</b> compatible - microSD slot at the rear side
TZT9/14/BB	<b>Compatible (USB2.0)</b> - Located at the rear side	Compatible: <b>SD/SDHC/SDXC</b> - Located at the front side

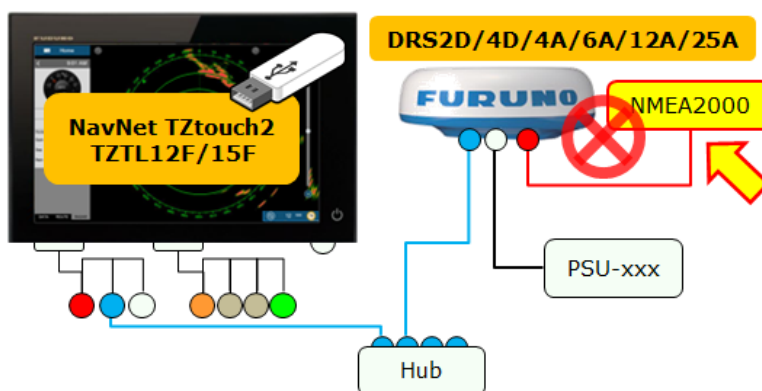
## Interconnection

(3) A USB can be used for update via TZT9/14/BB, TZTL12F/15F, TZT2BB, and TZT9F/12F/16F/19F. The TZT9/14/BB also accepts an SD/HC/XC card at the front card slot.



**Note on NavNet TZtouch2/TZtouch3 (TZT2BB , TZTL12F/15F , and TZT9F/12F/16F/19F):**

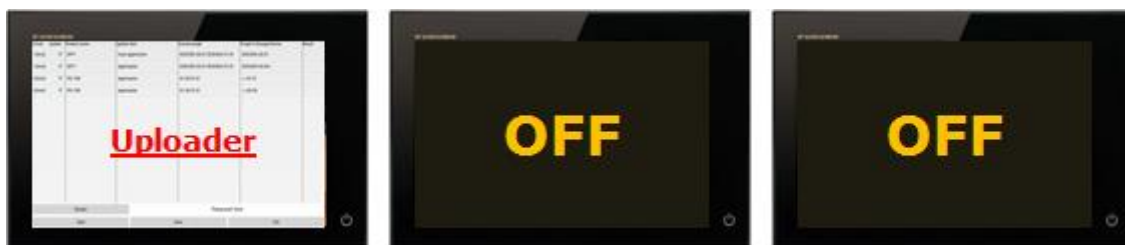
The NMEA2000 sensors such as SC-30 connected to the CANbus/NMEA2000 terminal of DRS2D/4D (dome) and DRS4A/6A/12A/25A (open array) **CANNOT** be updated via the Uploader.



## 2.2. Update via Uploader

**IMPORTANT NOTICE:**

**Only one (1) MFD should be turned ON, while the others are OFF.**



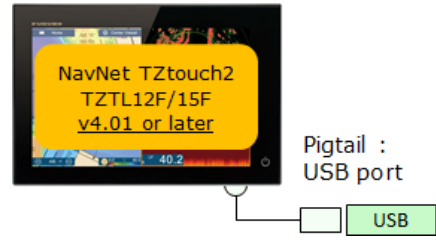


(1) Copy all the program files to the root of the USB memory drive or SD card.

**TZTL12F/15F, TZT2BB, and TZT9F/12F/16F/19F : USB**

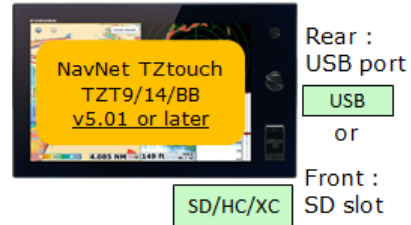
**TZT9/14/BB : USB or SD/HC/XC card**

(2) TZTL12F/15F, TZT2BB, and TZT9F/12F/16F/19F:  
Insert the USB memory to the pigtail USB port.



TZT9/14/BB:

Insert the USB memory to the rear USB port or the SD/HC/XC card to the front slot.

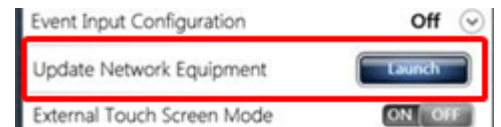


(3) Access [Settings] / [Menu] – [Initial Setup] – [Update Network Equipment].

TZTL12F/15F, TZT2BB, and TZT9F/12F/16F/19F



TZT9/14/BB



The screen will transit to an Uploader window.

(The following steps are described with screenshots from the TZTL12F/15F, TZT2BB, and TZT9F/12F/16F/19F. Words and phrases used in the Uploader screen are common or identical between the TZT9/14/BB and the rests.)



While the message [Now Initializing] appears, the MFD is comparing the networked devices with available program files in the USB memory or SD/HC/XC card.

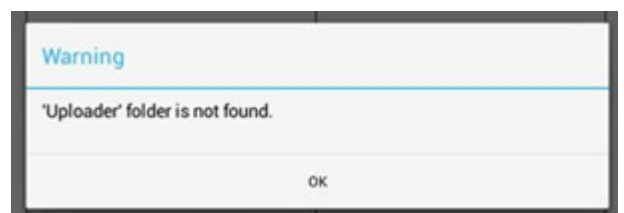
(Time)	Update	Product name	Update item	Current prog#	Prog# in Storage Device	Result
1 [min]	<input checked="" type="checkbox"/>	DF1	main application	0252353-02.01:0252364-01.01	0252353-02.01	-
1 [min]	<input checked="" type="checkbox"/>	DF1	Application	0252353-02.01:0252364-01.01	0252353-02.04+*	-
4 [min]	<input checked="" type="checkbox"/>	PG-700	Application	01.02.01.01	+.01.01	-
4 [min]	<input checked="" type="checkbox"/>	PG-700	Application	01.02.01.01	+.02.03	-

(4) Confirm that the Uploader window appears after initialization as shown at right.

Note that the product name will **NOT** appear if the update USB memory or SD card does **NOT** contain a program package for the target product.

**Tips:**

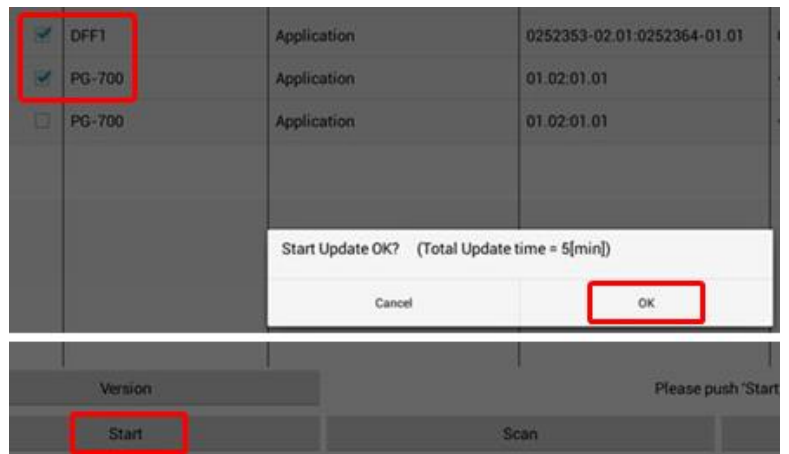
If the folder [Uploader] is **NOT** available in the USB memory or SD/HC/XC card, the warning message [‘Uploader’ folder is not found] will appear or the Unuploader window will not launch.



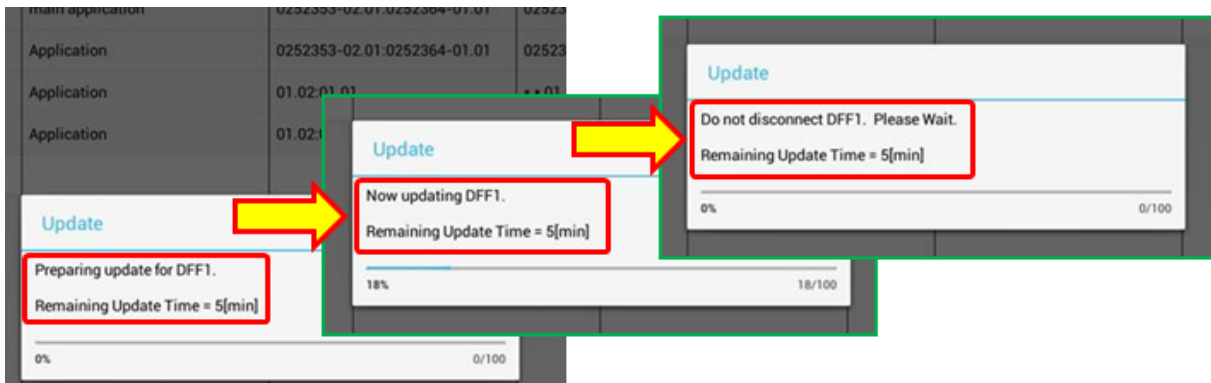
(5) Select the product to be updated and tap **[Start]**.

In this example, [DFF1] and [PG-700] are selected.

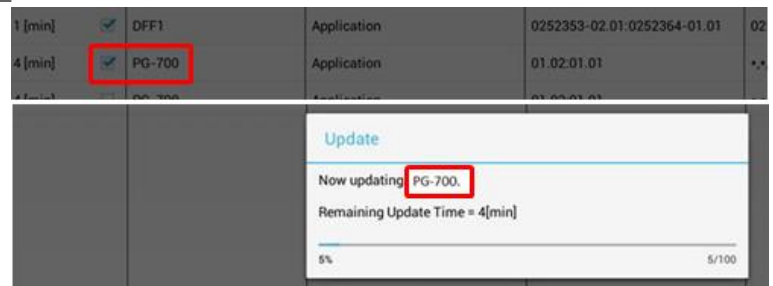
(6) After the message [Start Update OK? (Total Update time = xx [min])] appears, select **[OK]** to proceed.



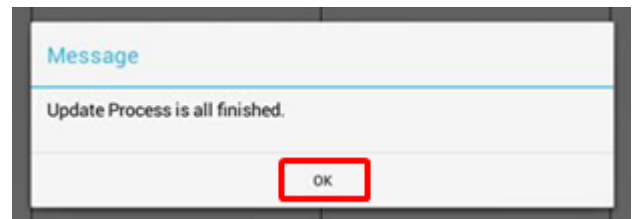
(7) Update will start. See that the progress bar grows during the update process.



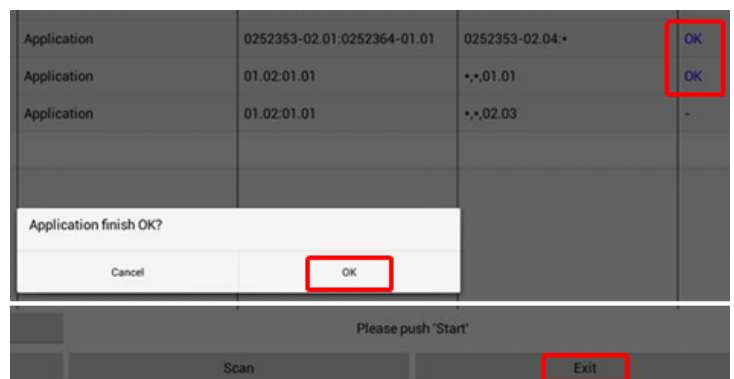
After the update of the first unit finishes, the next will automatically be updated. In the following example, the PG-700 is updated after the DFF1.



(8) After all the updates finish, the message [Update Process is all finished.]. Tap **[OK]** to finish. (TZTL12F/15F, TZT2BB, and TZT9F/12F/16F/19F)



(9) Confirm that the result is shown as **[OK]** and that the program version in the update USB memory or SD card is shown in **[Current prog#]** for all the target units.



(10) To close the Uploader window, tap **[Exit]** and select **[OK]**.